

# Swiss Rail&Road Factory

## NEUHEITEN

3. QUARTAL 2014

MODELLE UND ZUBEHÖR

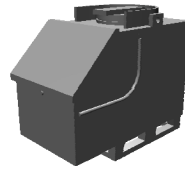
1:87 H0 / H0m



## ZUBEHÖR BAU

**1630 001 000** Treibstofftank 550 l

-51 gelb



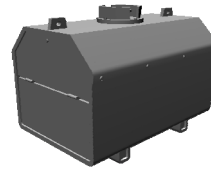
**1630 002 000** Treibstofftank 750 l

-51 gelb



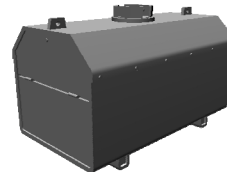
**1630 003 000** Treibstofftank 1150 l

-51 gelb



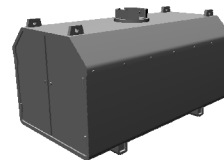
**1630 004 000** Treibstofftank 2000 l

-51 gelb



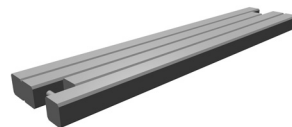
**1630 005 000** Treibstofftank 3000 l

-51 gelb



**1630 016 000** Baggermatten  
6 Stück

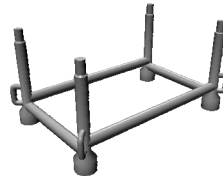
-56 braun



## ZUBEHÖR LADEGUT

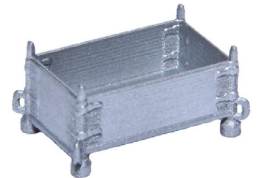
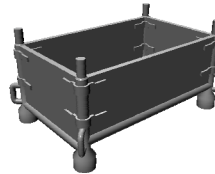
**1660 011 000** Transport-Barelle  
2 Stück

-57 grau



**1660 012 000** Transport-Barelle geschlossen  
2 Stück

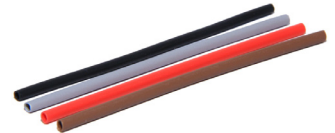
-57 grau

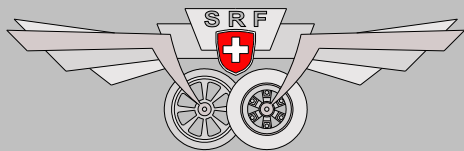


## ZUBEHÖR ANLAGEGESTALTUNG

**1650 047 000** Rohrleitung NW 200  
9 Stück

-52 rot  
-55 schwarz  
-56 braun  
-57 grau





Swiss Rail&Road Factory  
[www.sr-factory.ch](http://www.sr-factory.ch)



Ihr SR-Factory Fachhändler

Swiss Rail&Road Factory  
Bahnhofstrasse 12  
6362 Stansstad  
[info@sr-factory.ch](mailto:info@sr-factory.ch)